

## Casos Urologia

Prof. Me. Leonardo de Souza Piber

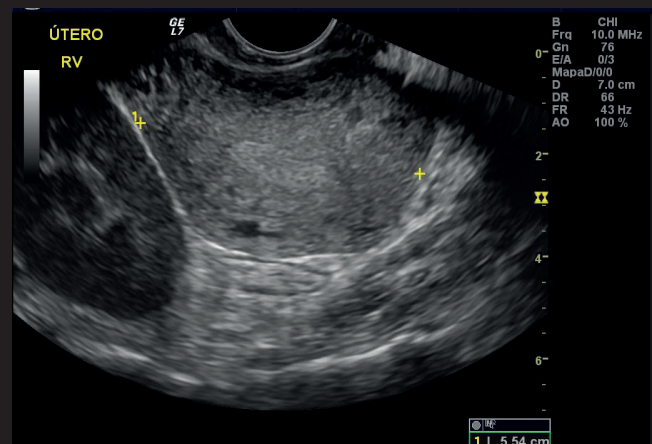
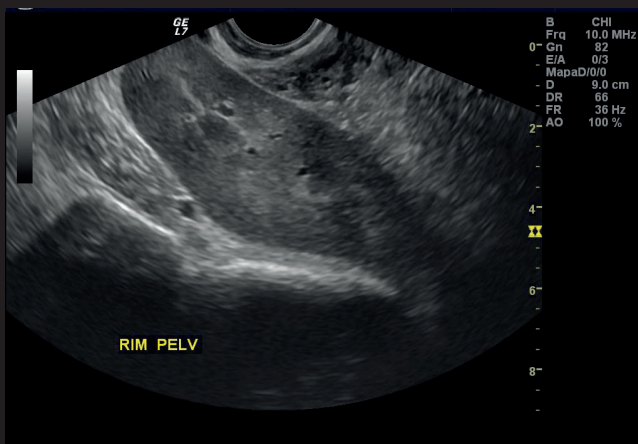


Agradecimentos:  
Equipe médica do CDB

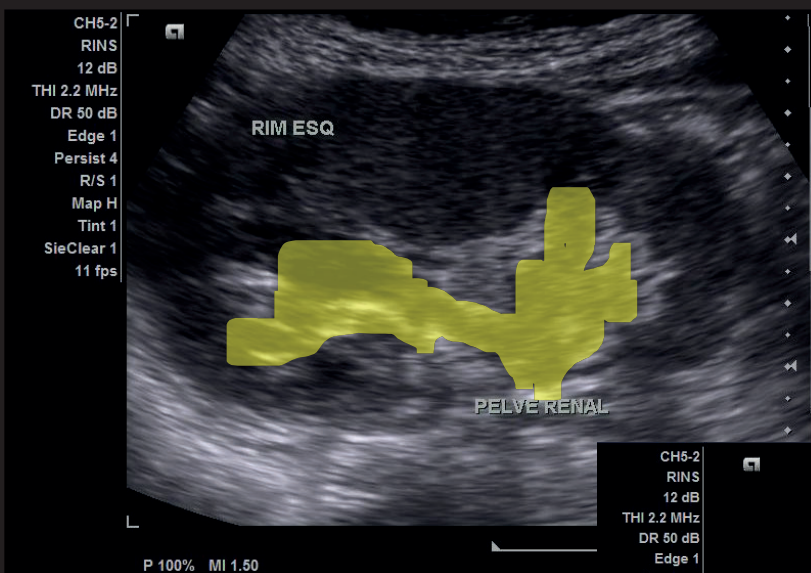
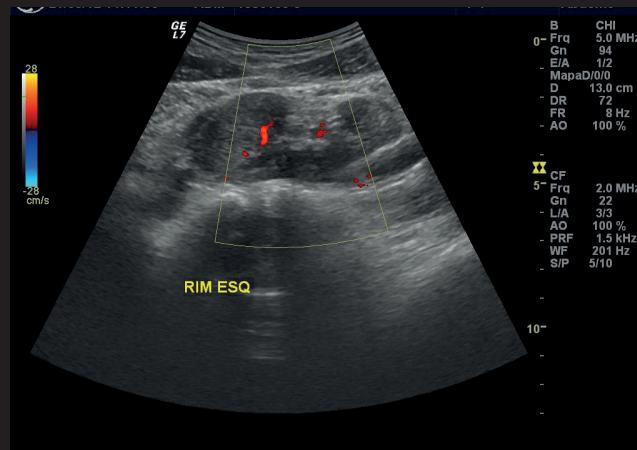
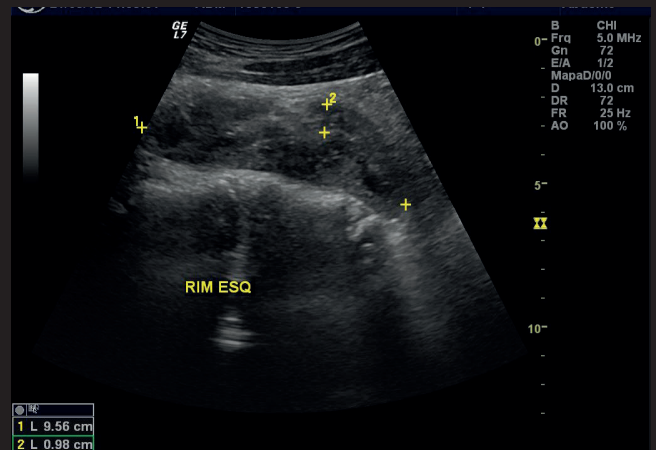
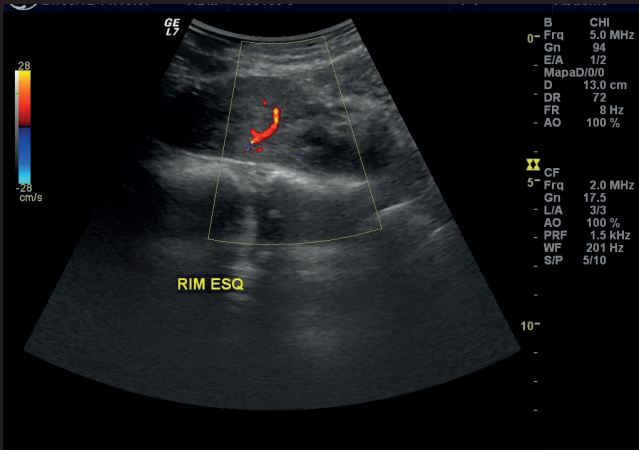
# Parte 1

## Rins e ureteres

### Rim pélvico



# Rim ectópico

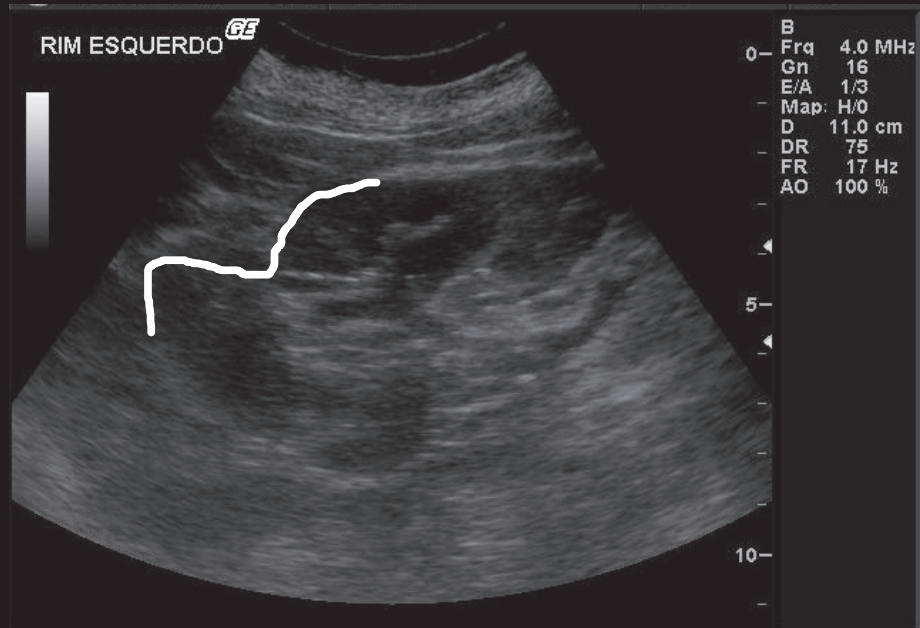


Pionefrose

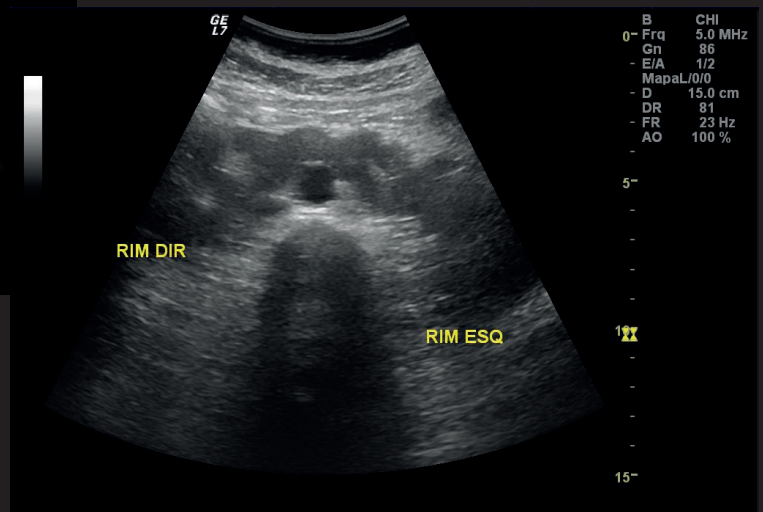
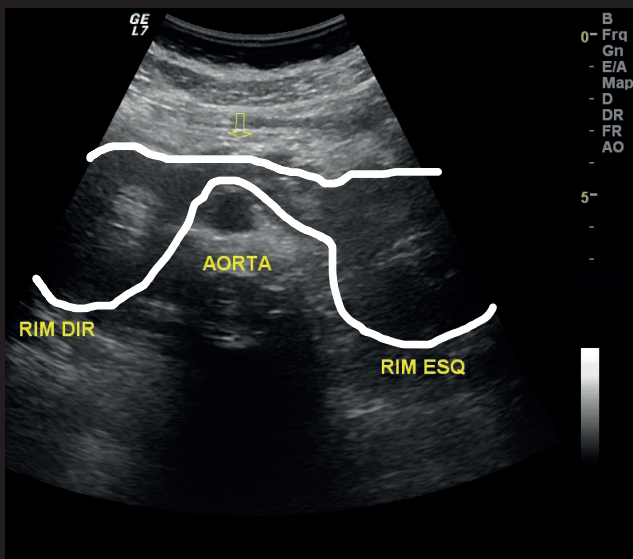
Hematúria



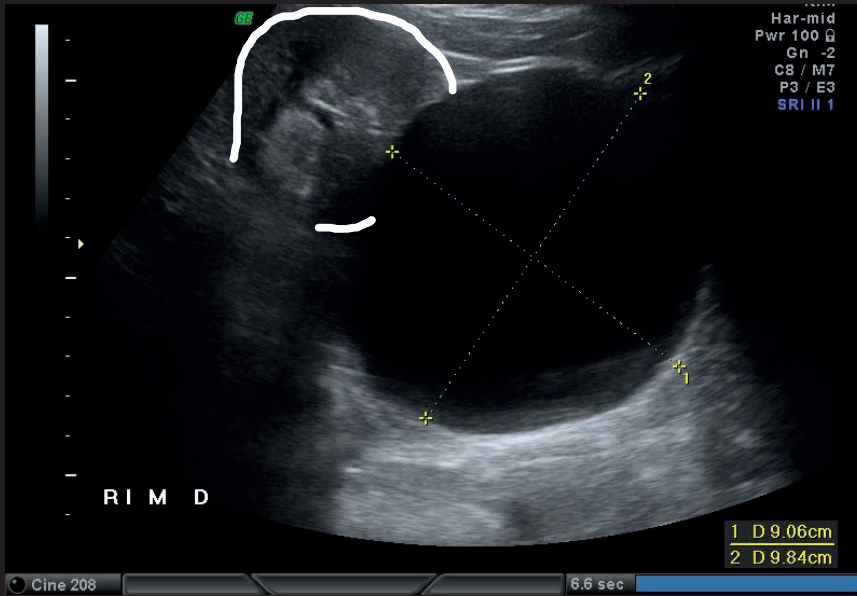
# Retração parênquima



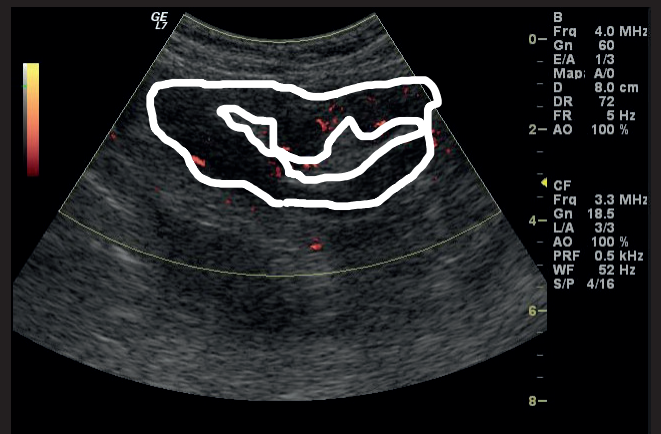
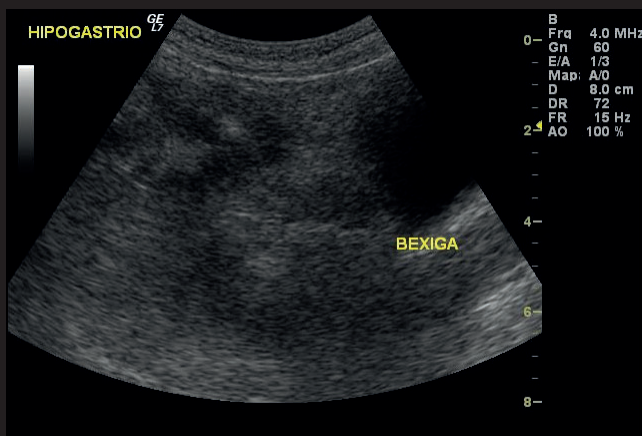
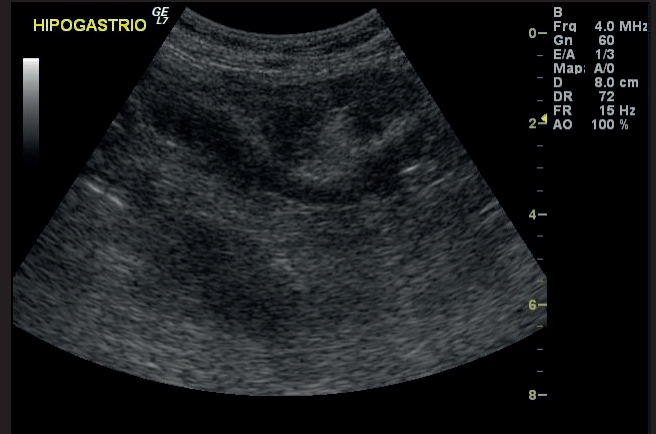
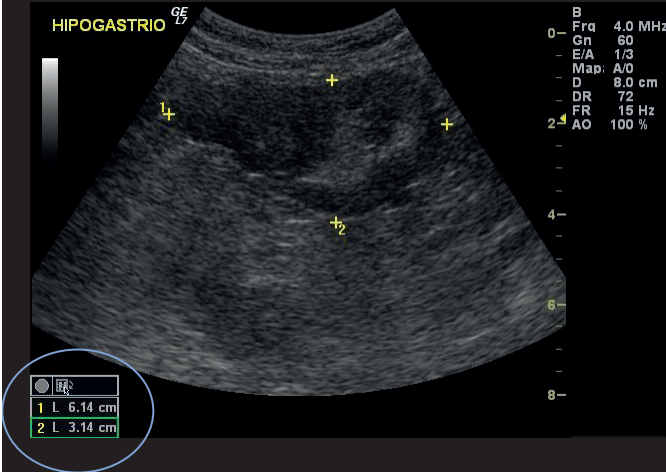
# Rim em ferradura



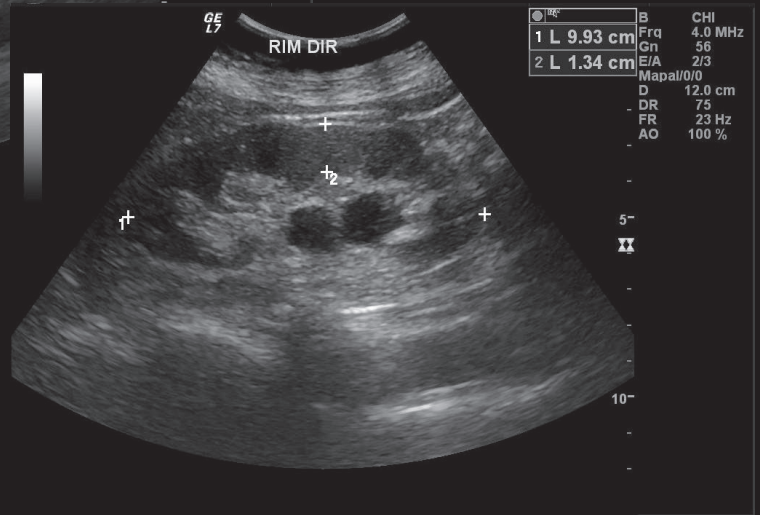
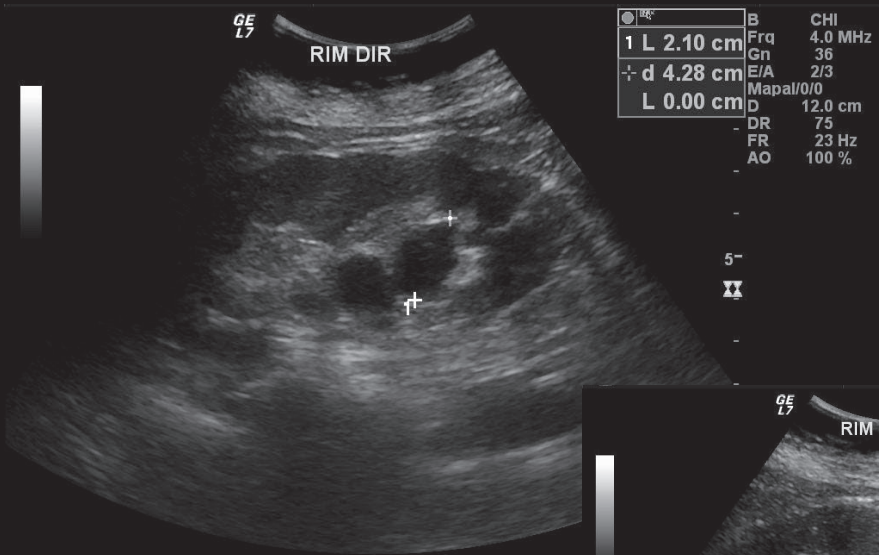
Cisto simples renal  
Cisto renal



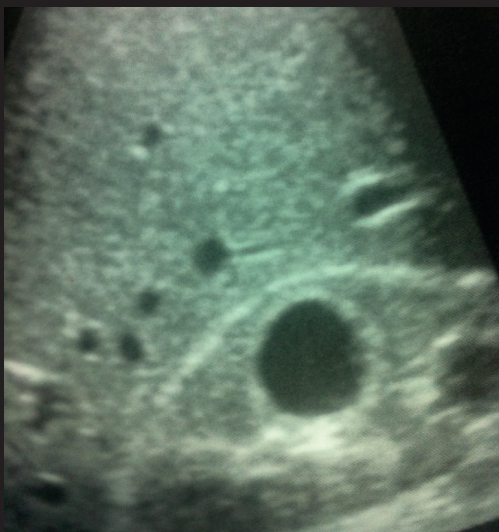
Pseudorim



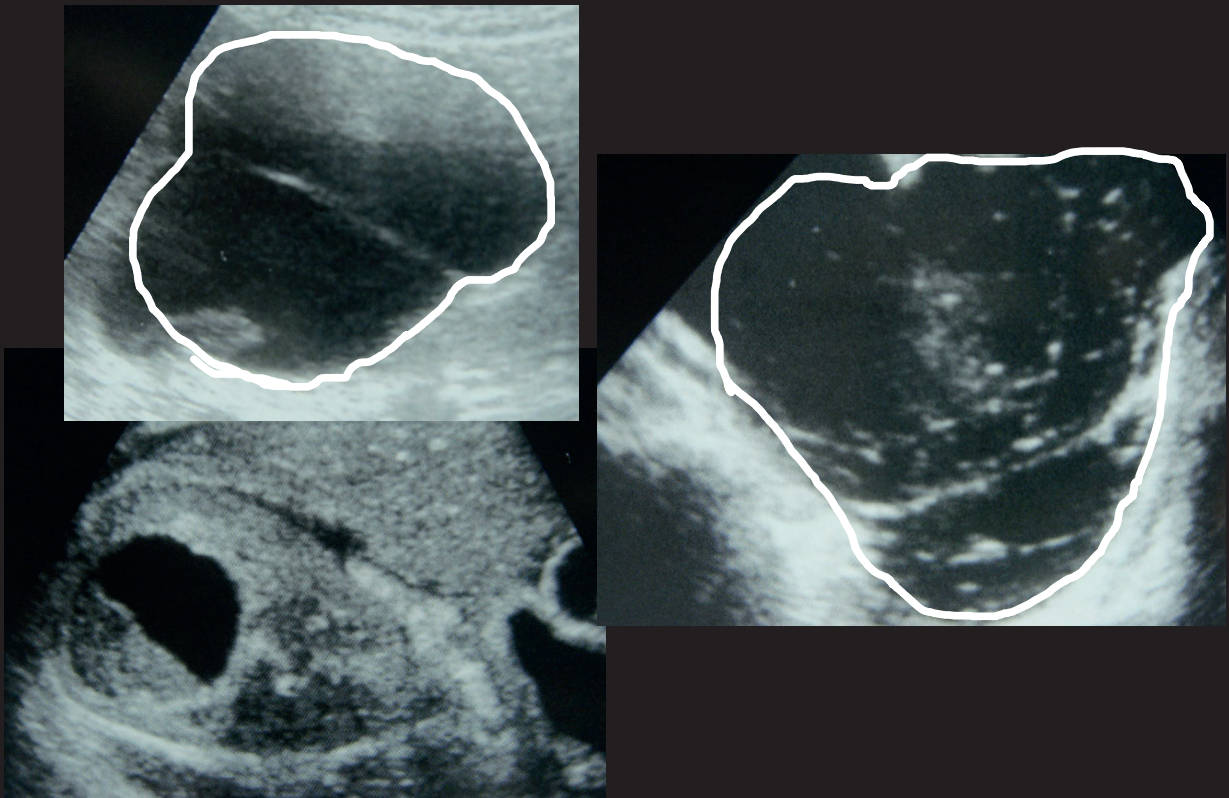
## Cistos Peripélvicos



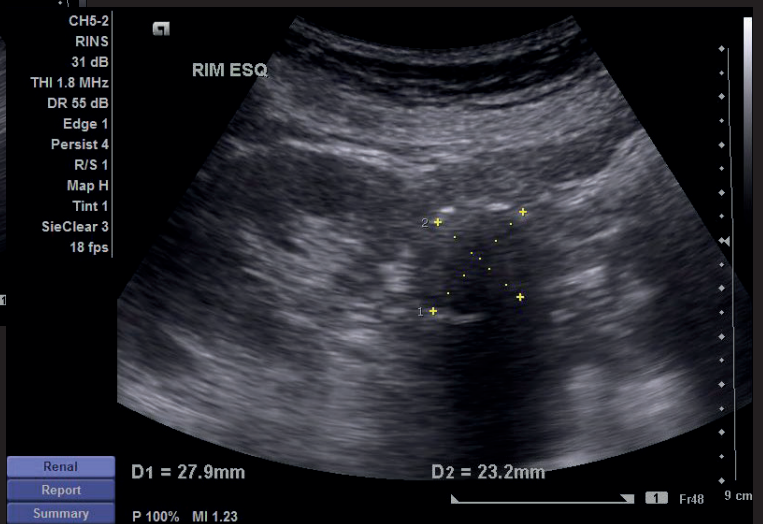
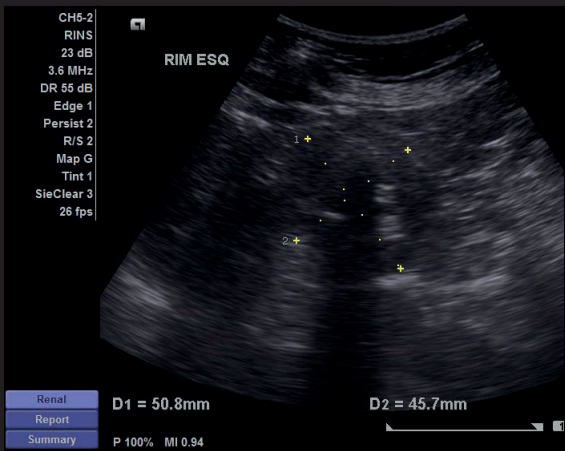
## Cistos Renais (simples)



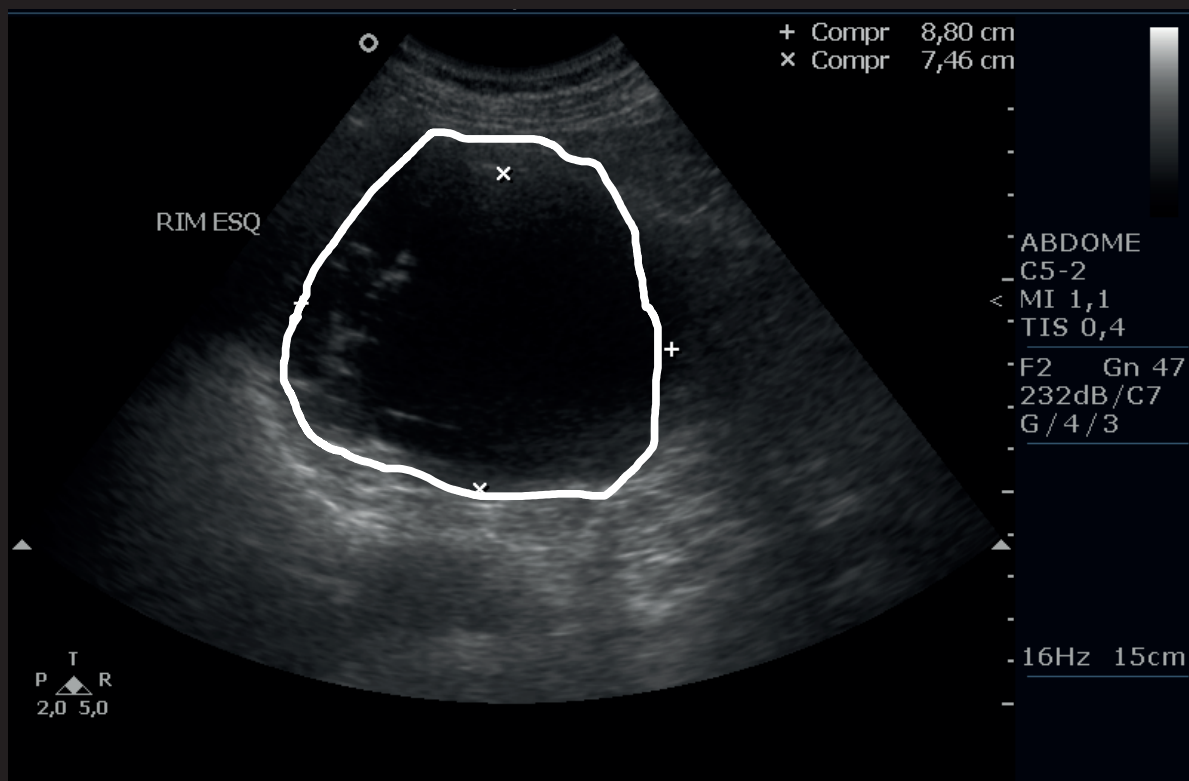
# Cistos Renais (complexos)



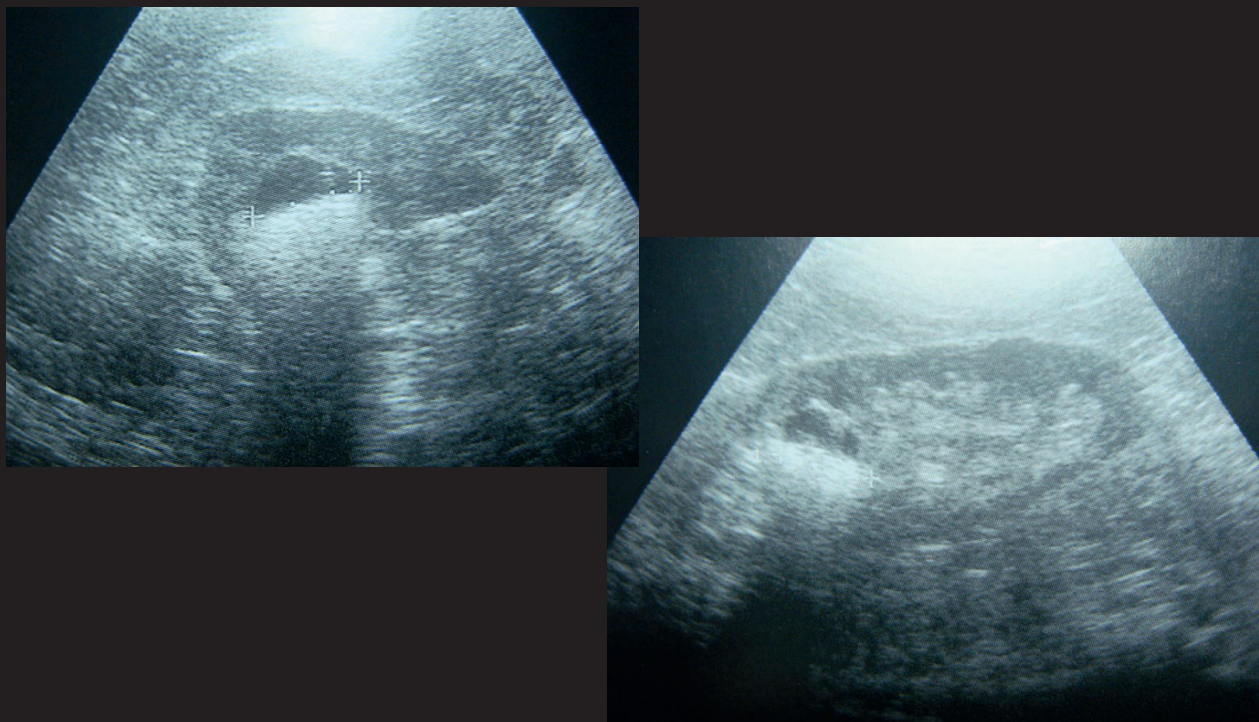
# Cisto complexo renal



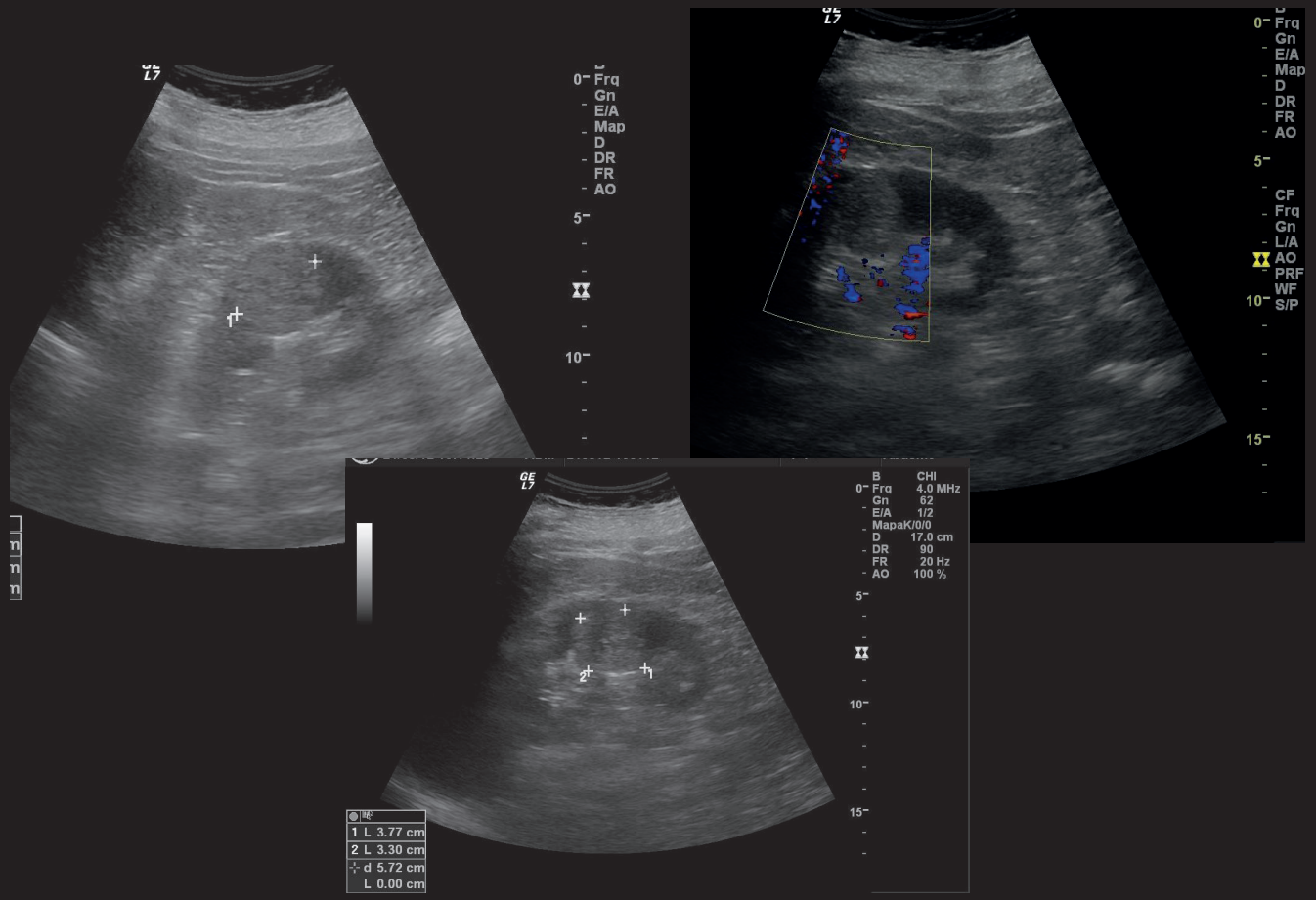
# Cisto complexo renal



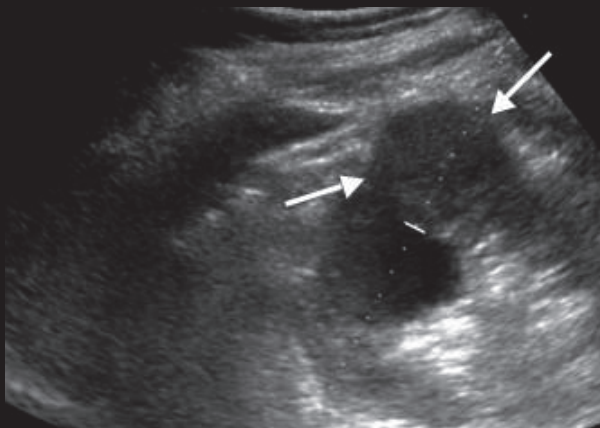
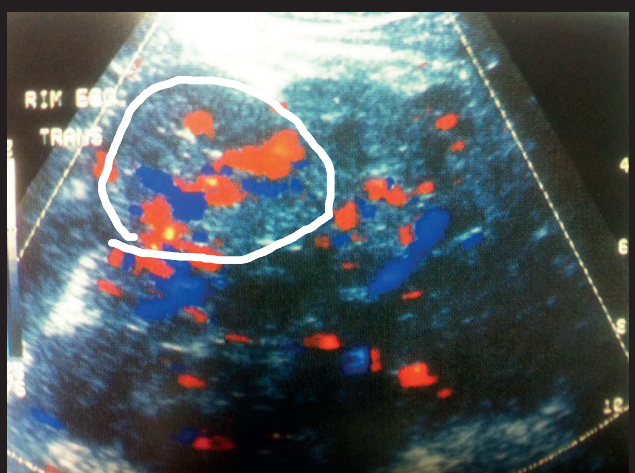
# Cisto com conteúdo tipo leite de cálcio



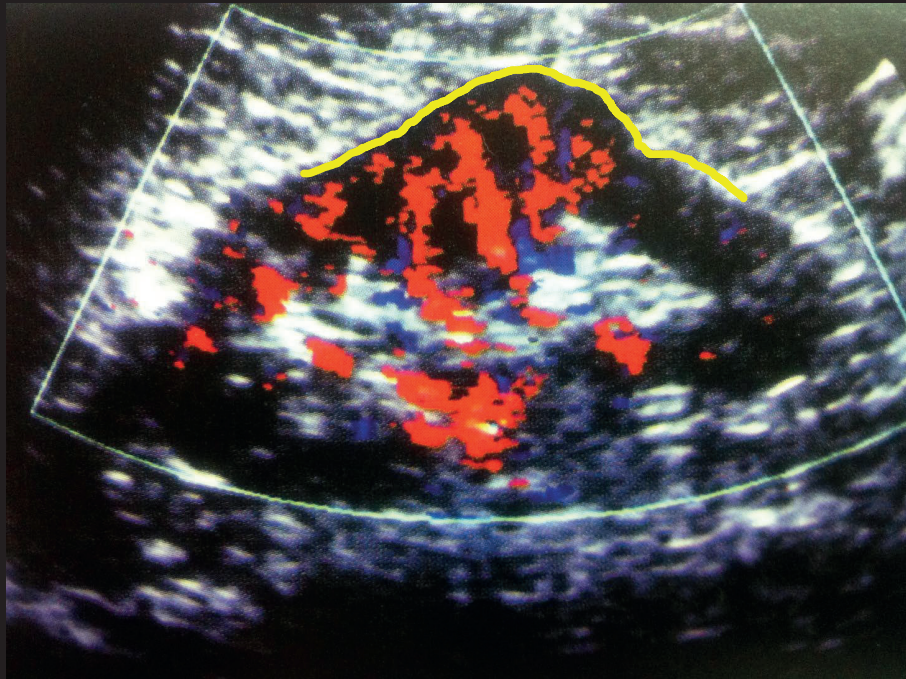
# Nódulo Renal



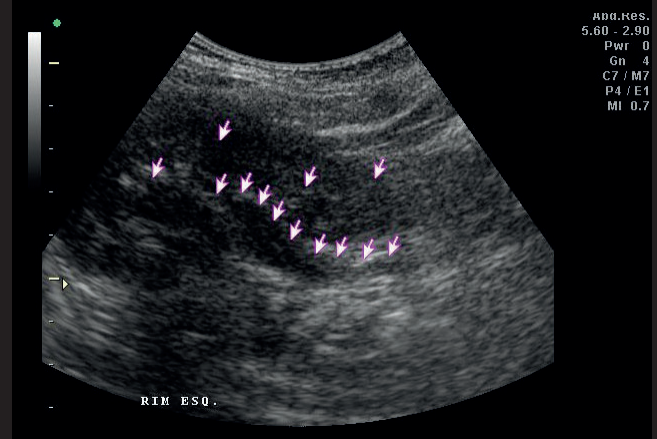
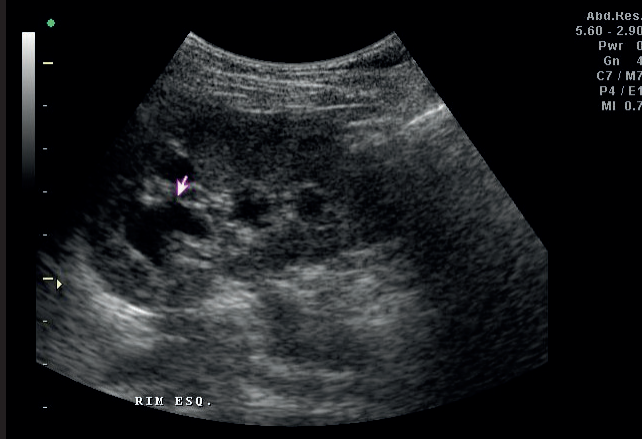
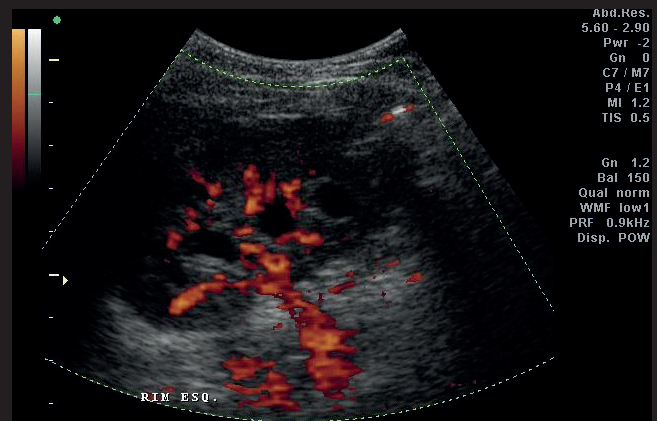
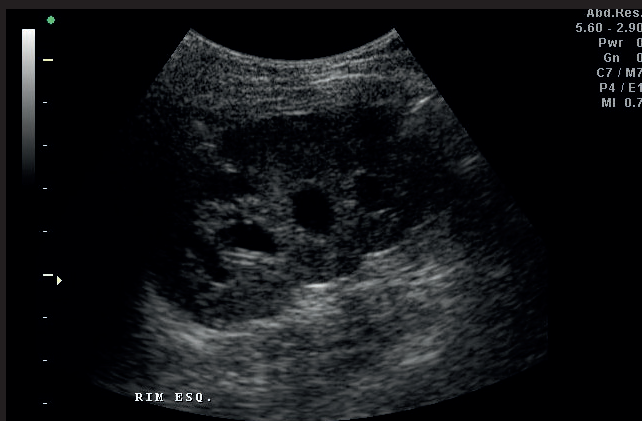
# Nódulo Renal



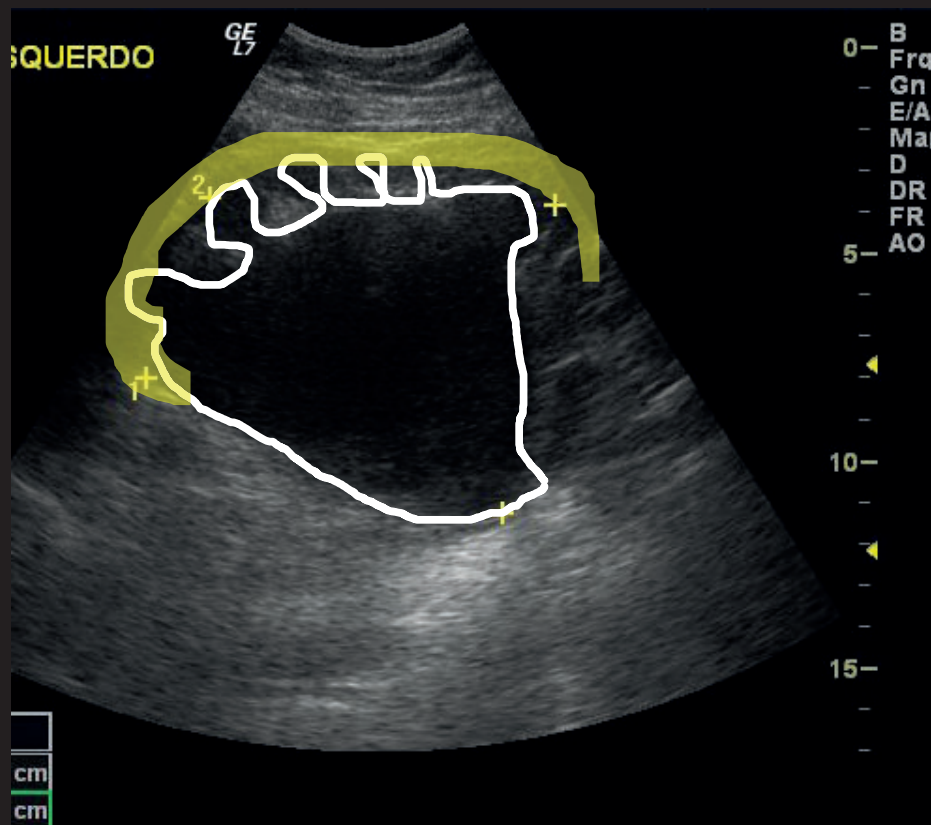
Corcova de Dromedário  
Sem efeito de massa  
Mantem sentido da vascularização



ectasia

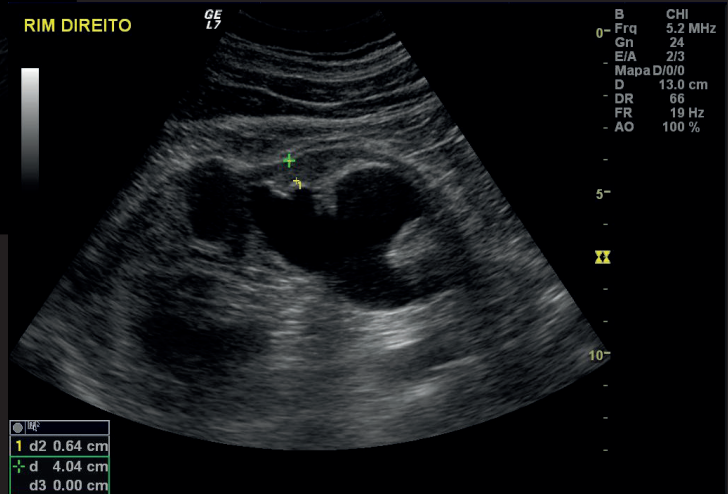
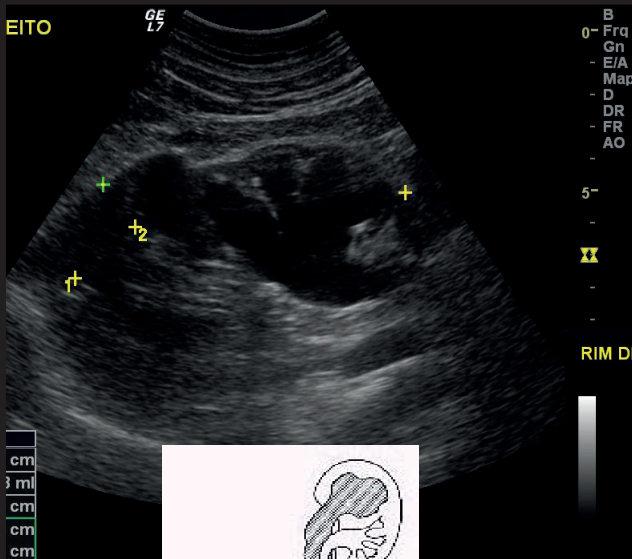
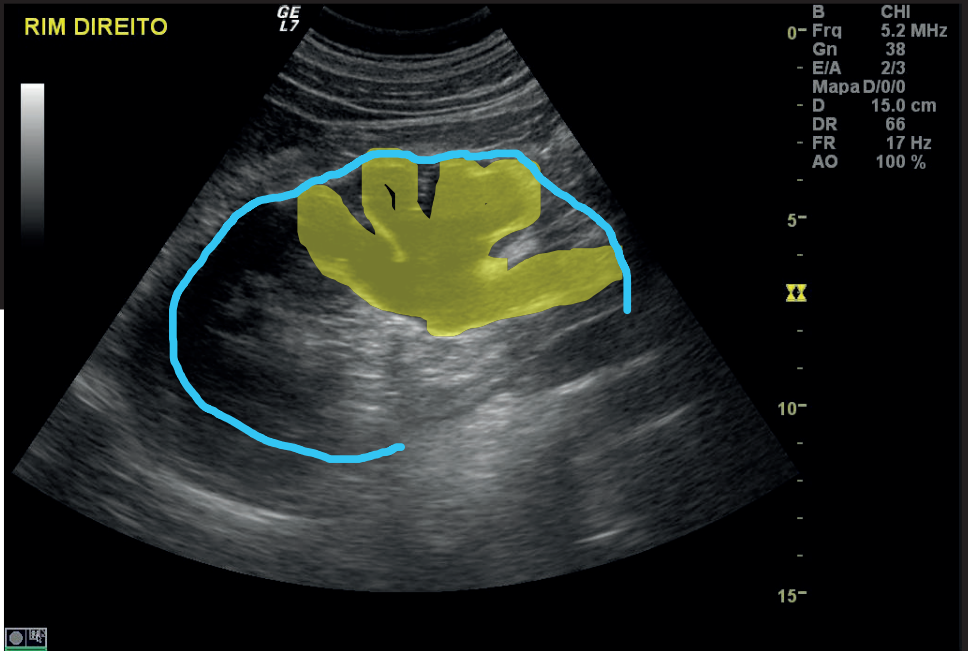
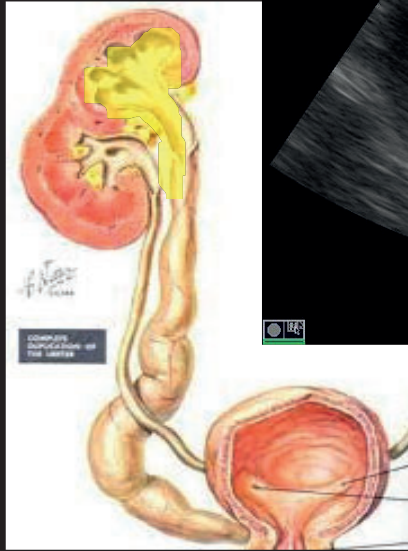
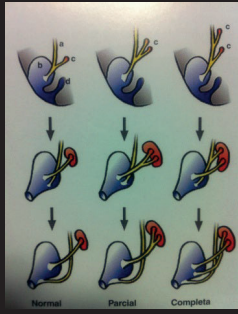


# Hidronefrose

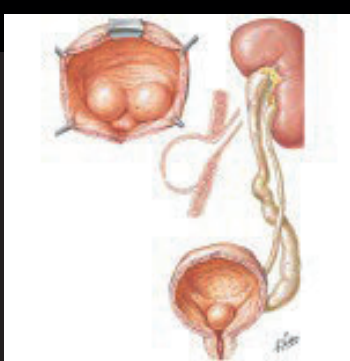
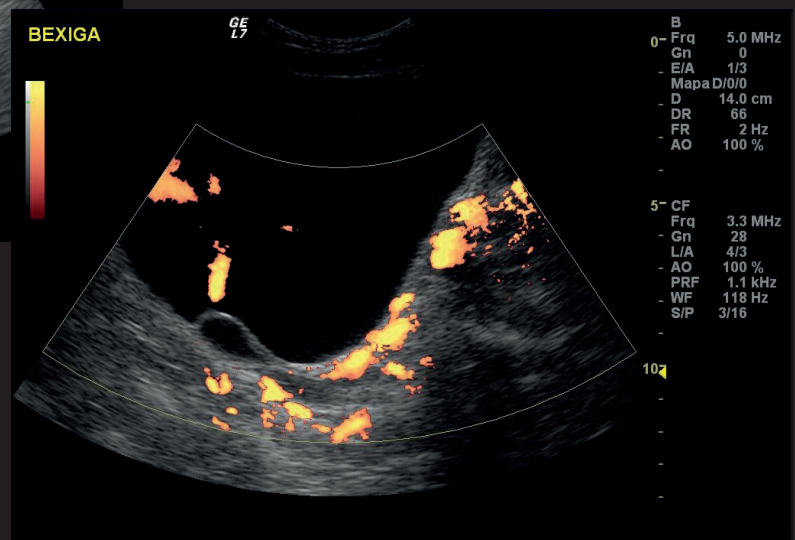
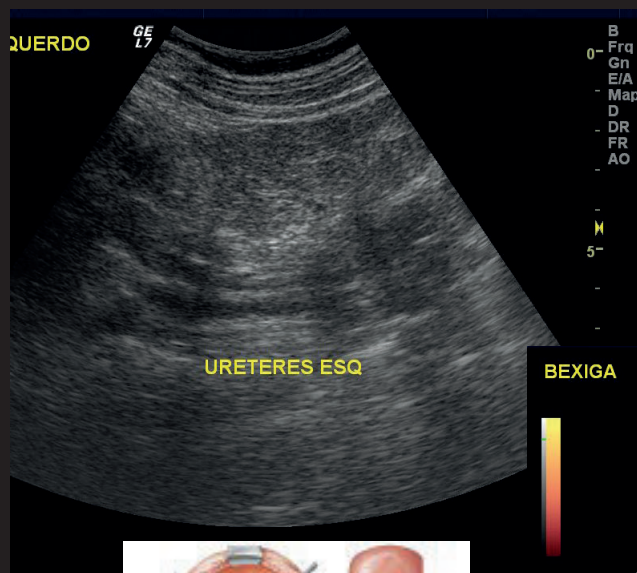
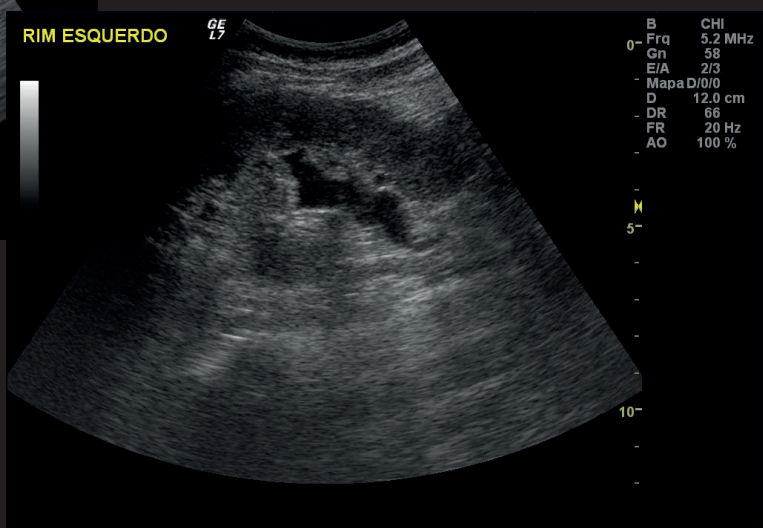
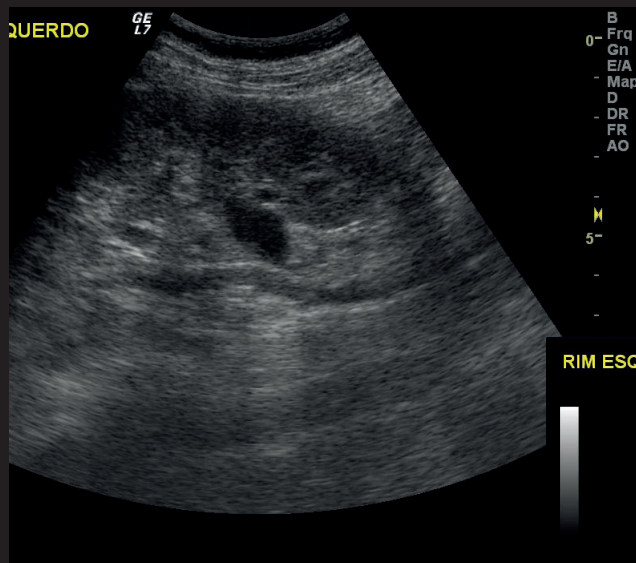


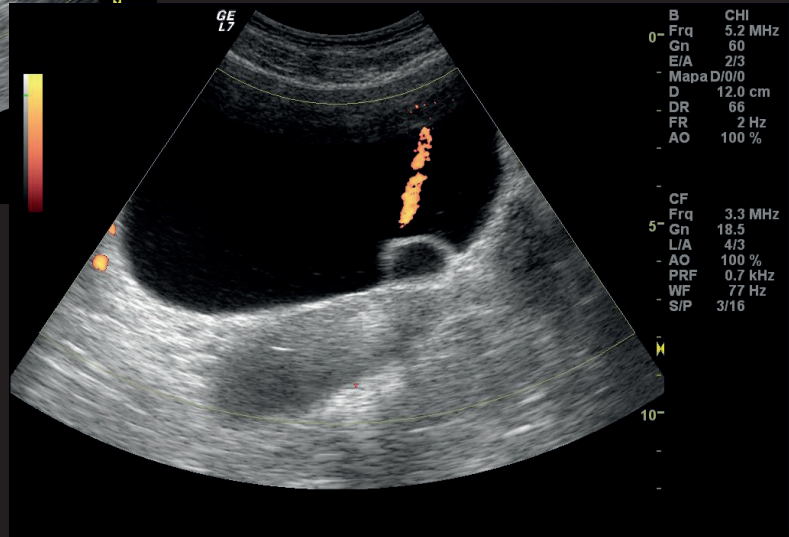
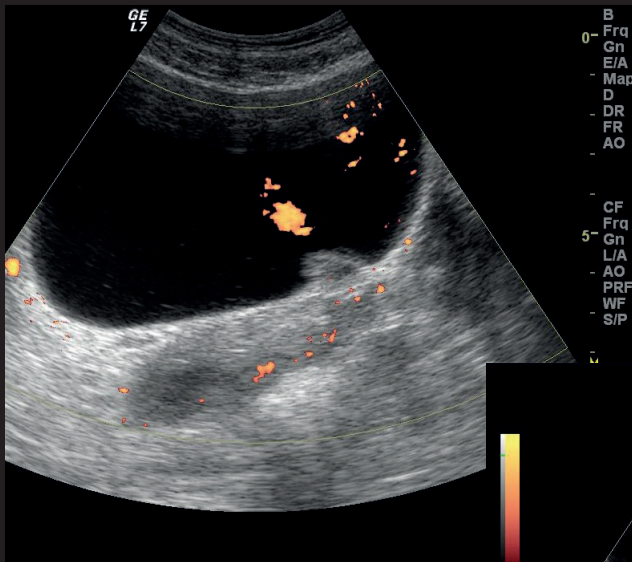
Duplicidade pielocalicinal?  
Provavelmente sim





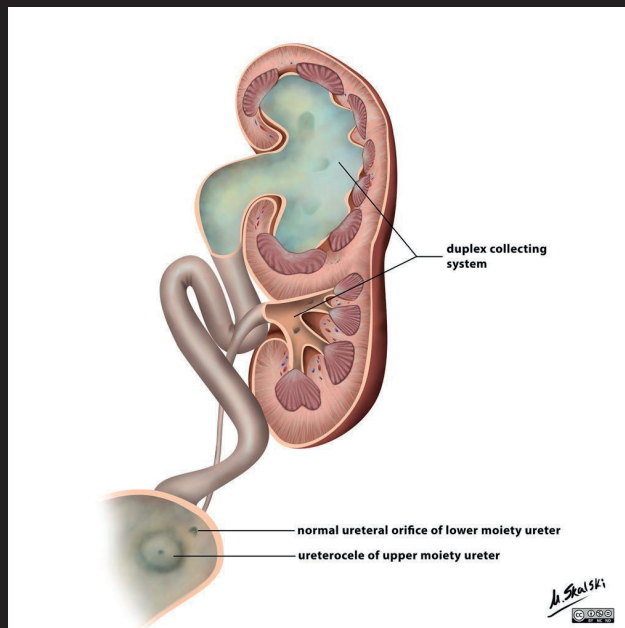
regra de Weigert-Meyer





## DUPLICIDADE PIELOCALICINAL

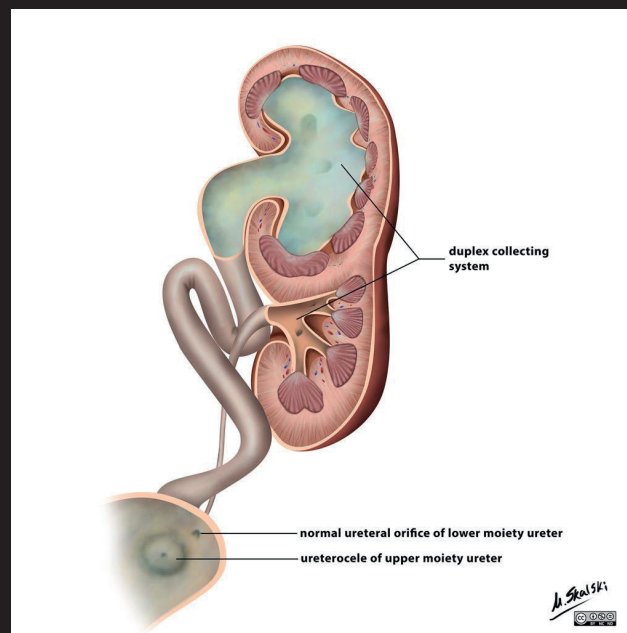
- Completa:



Casos gentilmente cedido pela Dra. Michelle Meloni

## DUPLICIDADE PIELOCALICINAL

- Comum associação com anomalias de implantação do ureter da unidade superior
- Ureterocele ectópica associada à dilatação do sistema coletor e hipoplasia do parênquima correspondente
- Ureter inferior – perda mecanismo antirrefluxo – refluxo em até 75% casos

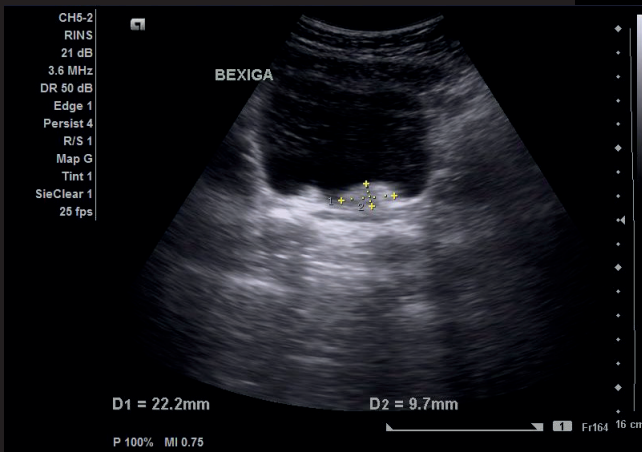
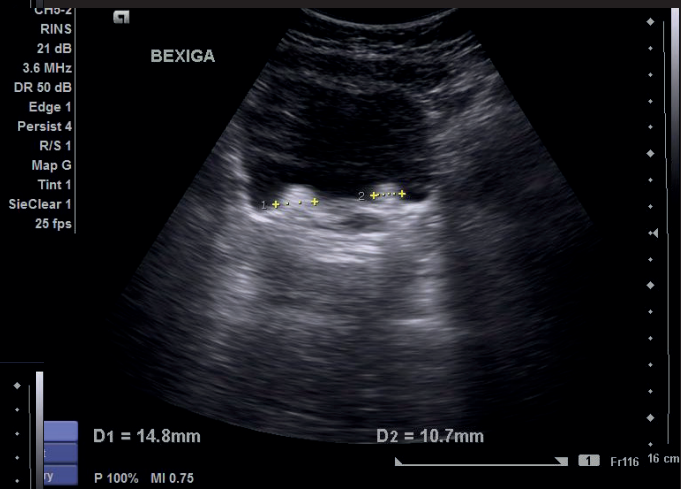
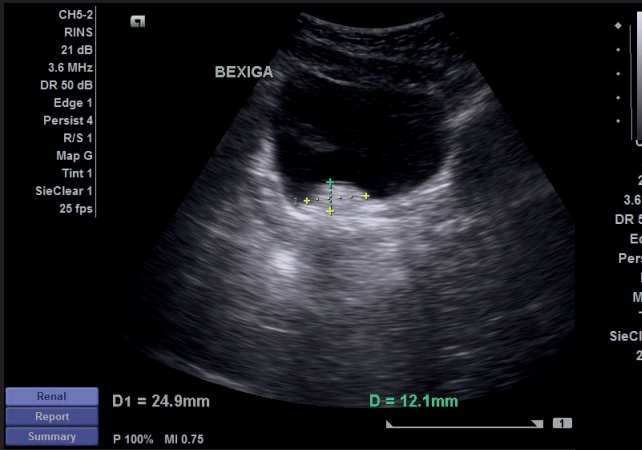


Casos gentilmente cedido pela Dra. Michelle Meloni

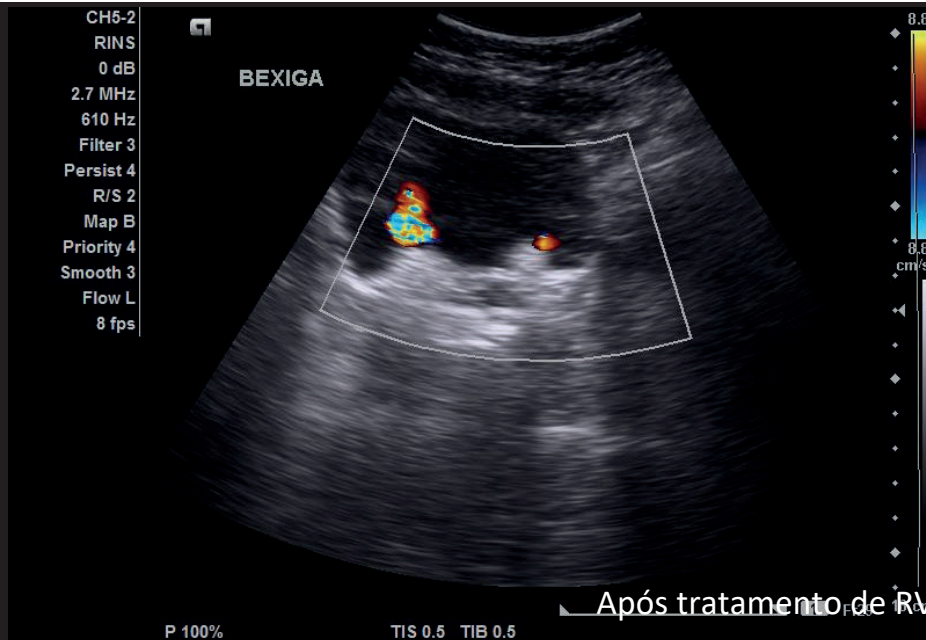
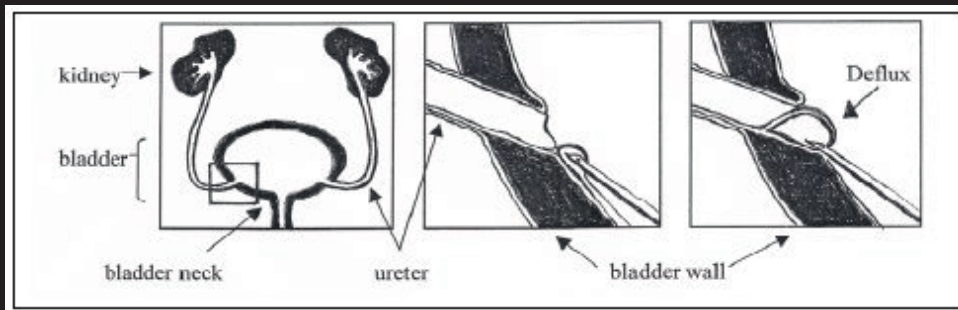
## DUPLICIDADE PIELOCALICINAL

- Ultrassom
  - Quando não há obstrução ou hidronefrose, pode ser subótimo na sua detecção
  - É capaz de detectar ureteroceles, se presentes
  - Fornece excelentes informações anatômicas, mas não diferencia bifurcação completa e incompleta
- TC

Casos gentilmente cedido pela Dra. Michelle Meloni

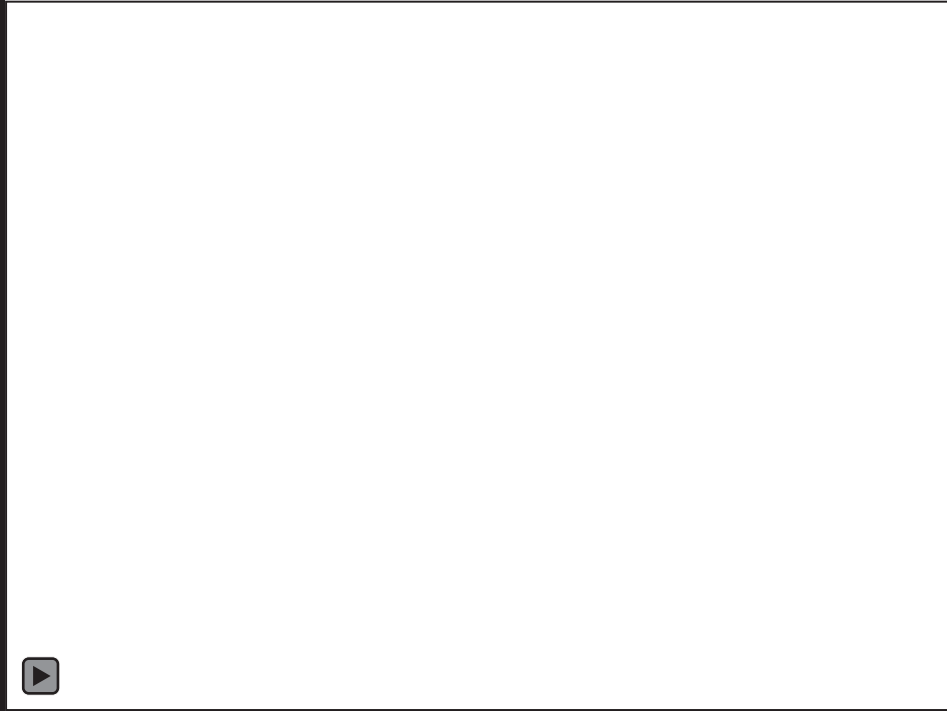


Após tratamento de RVU



Após tratamento de RVU

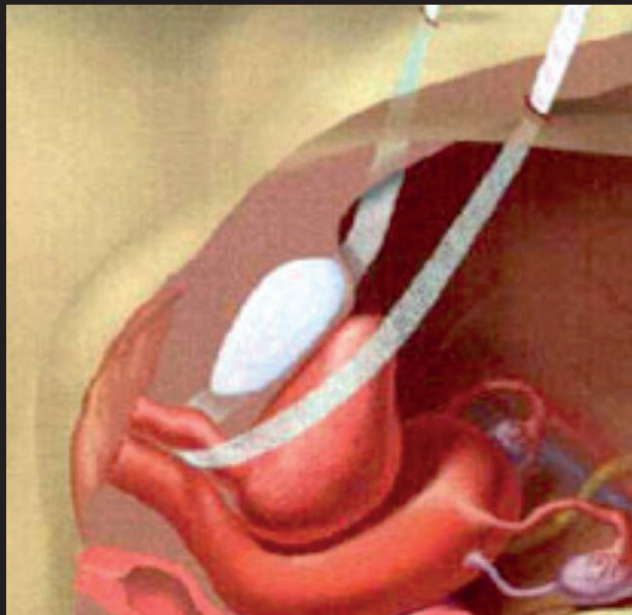
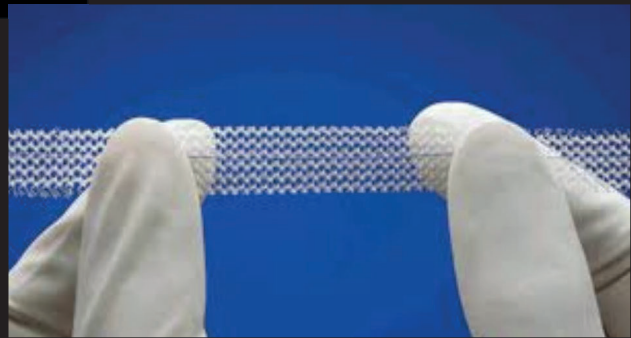
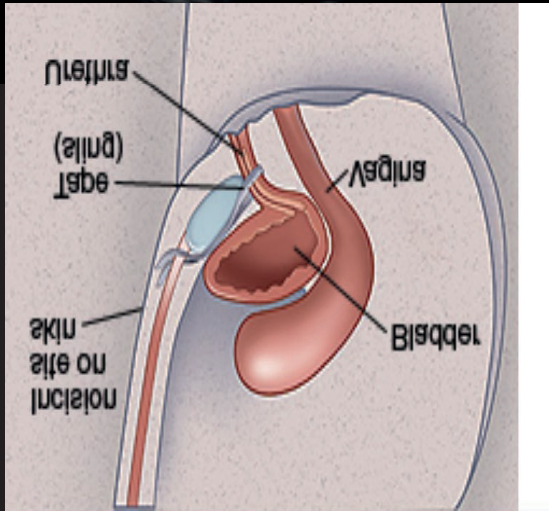
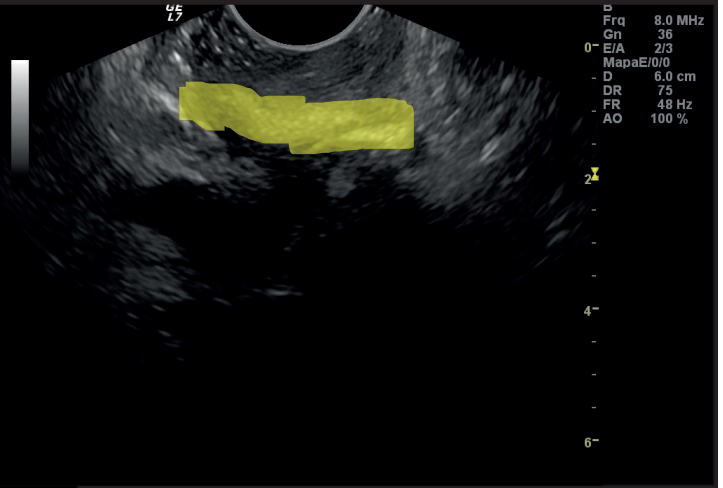
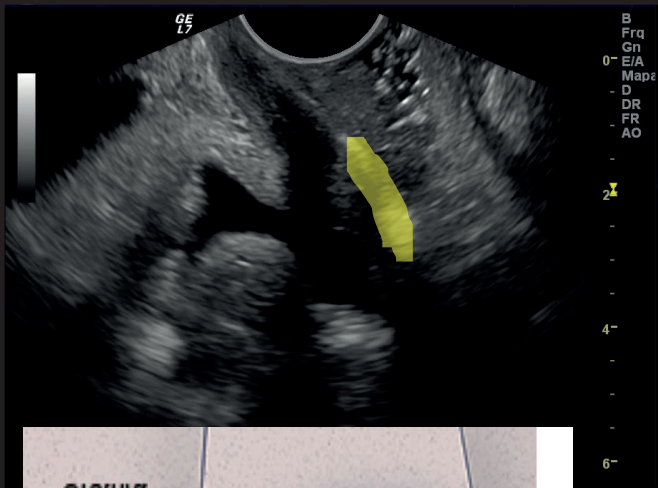
Video



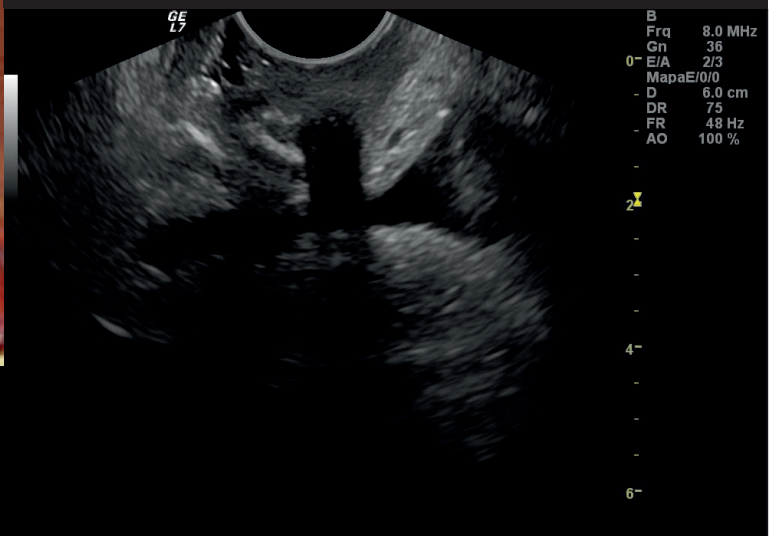
## Parte 2

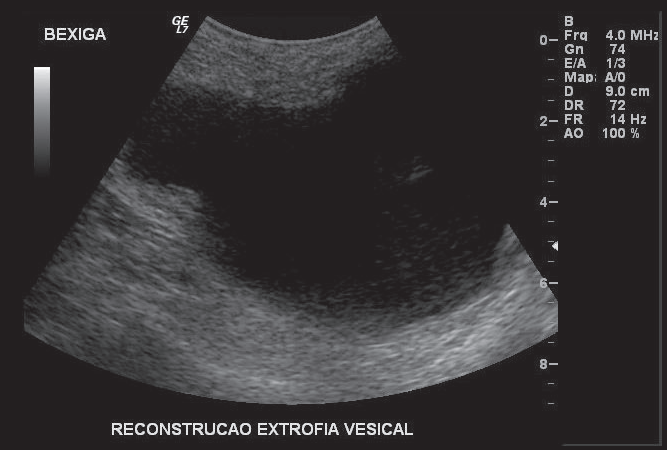
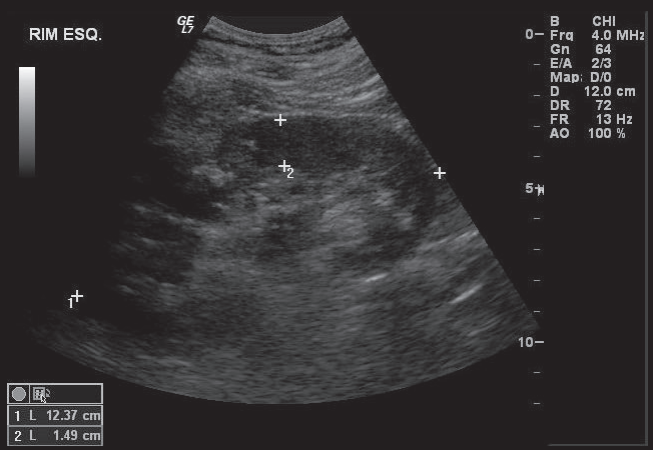
Bexiga e uretra

# Sling Vaginal



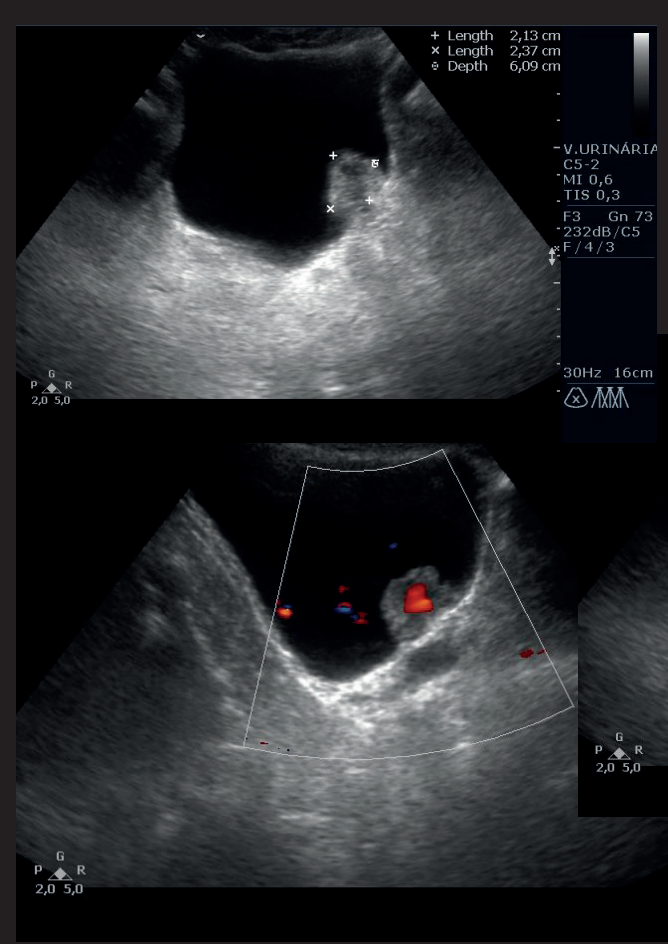
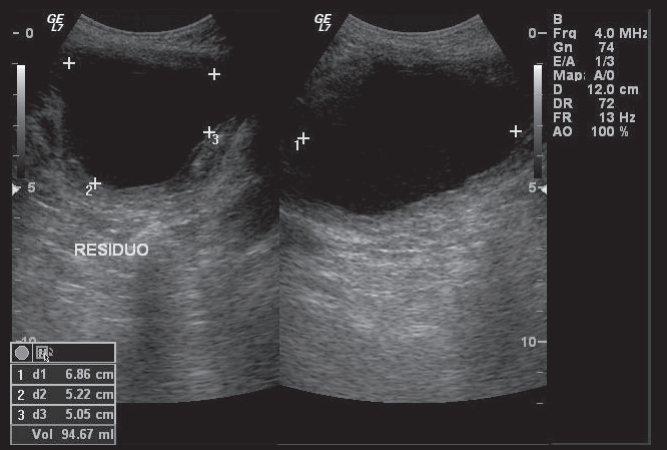
# Sling Vaginal



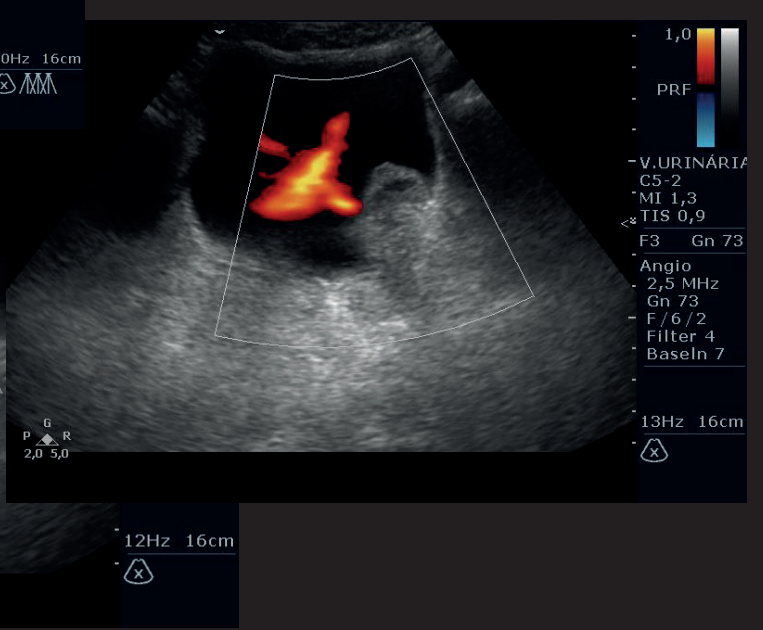


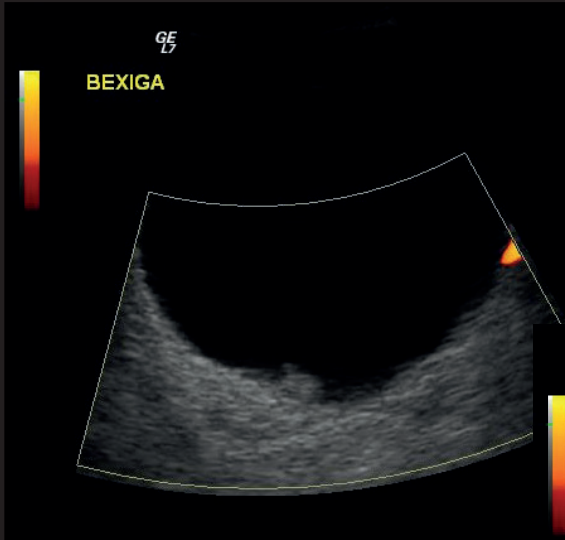
RECONSTRUCAO EXTROFIA VESICAL

Extrofia Vesical



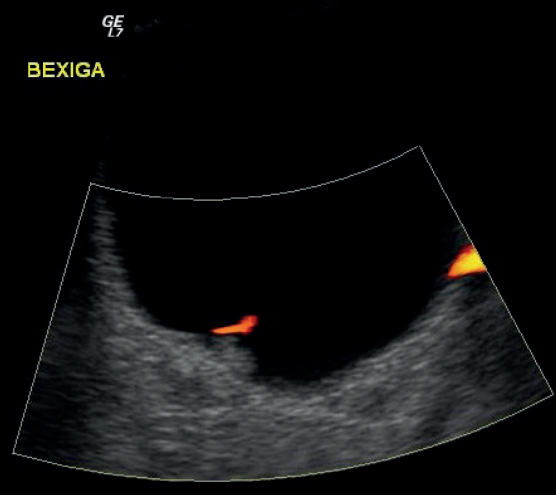
Tumor Vesical





B CHI  
 Frq 4.0 MHz  
 Gn 26  
 E/A 2/3  
 Map: A/0  
 D 14.0 cm  
 DR 72  
 5- FR 6 Hz  
 AO 100 %

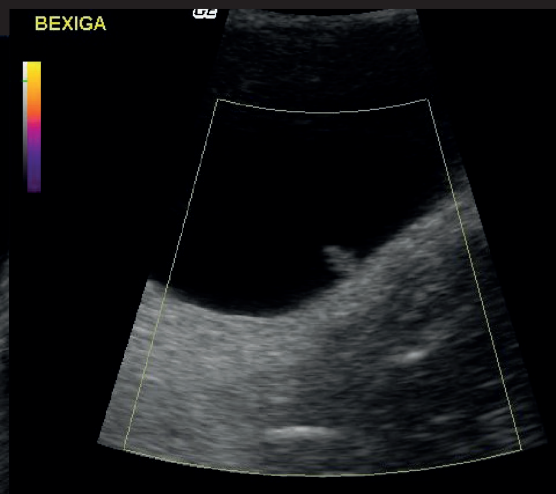
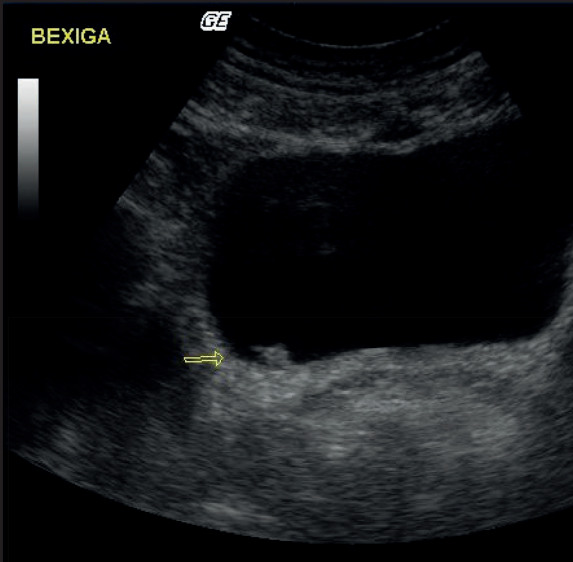
Tumor Vesical



B CHI  
 Frq 4.0 MHz  
 Gn 22  
 E/A 2/3  
 Map: A/0  
 D 14.0 cm  
 DR 72  
 5- FR 8 Hz  
 AO 100 %

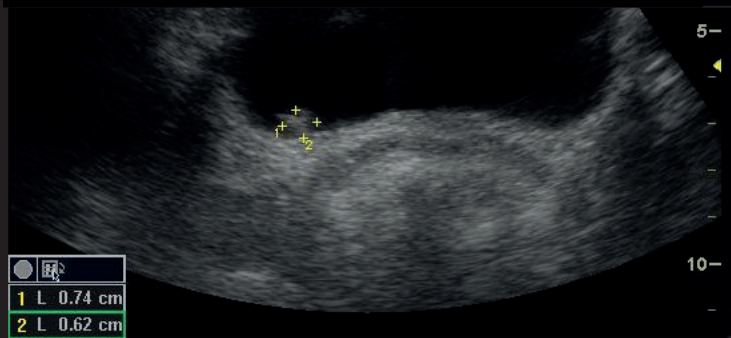
CF  
 Frq 3.3 MHz  
 Gn 23  
 L/A 2/3  
 AO 100 %  
 10- PRF 0.5 kHz  
 S/P 4/16

Tumor Vesical

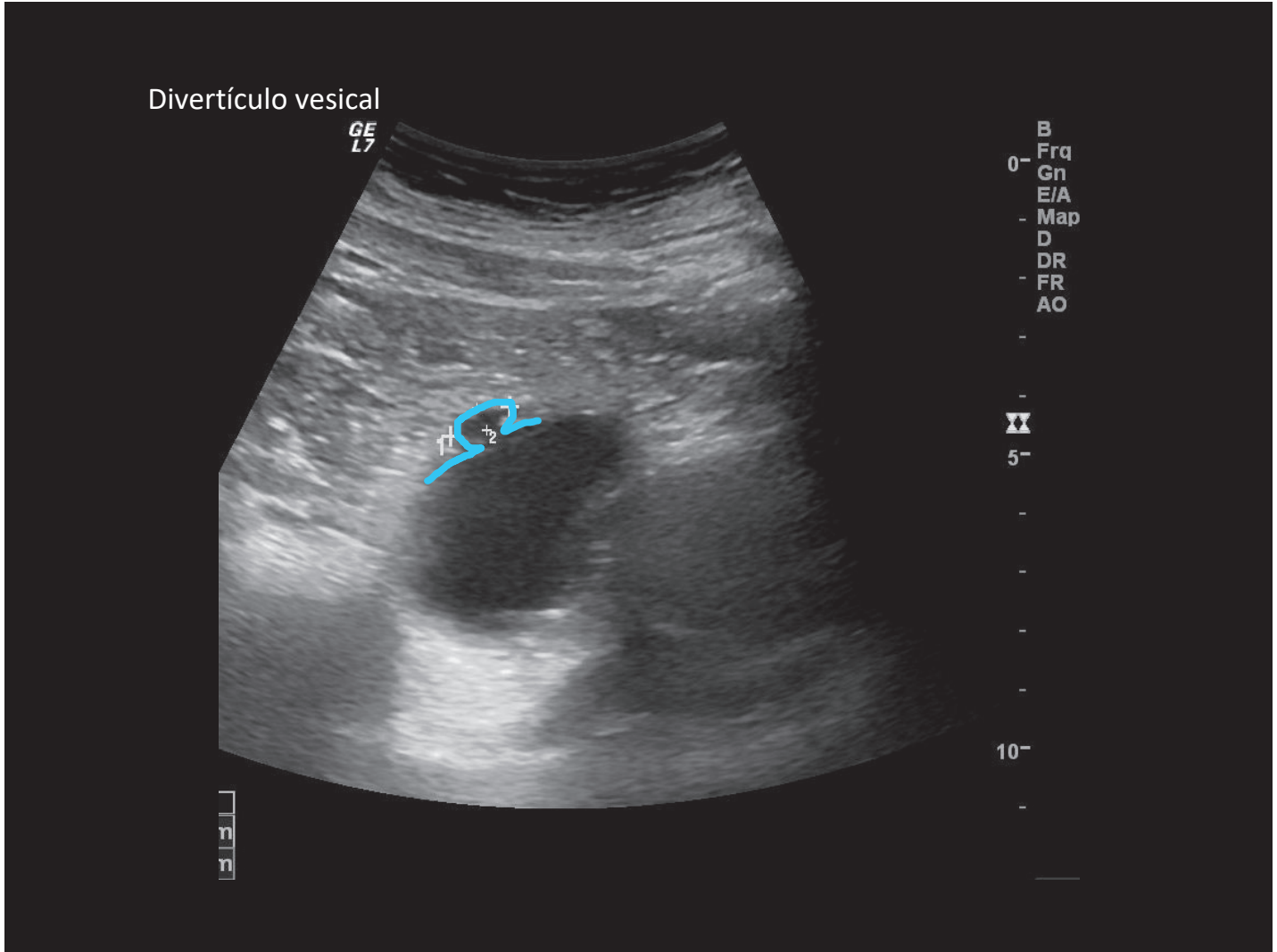
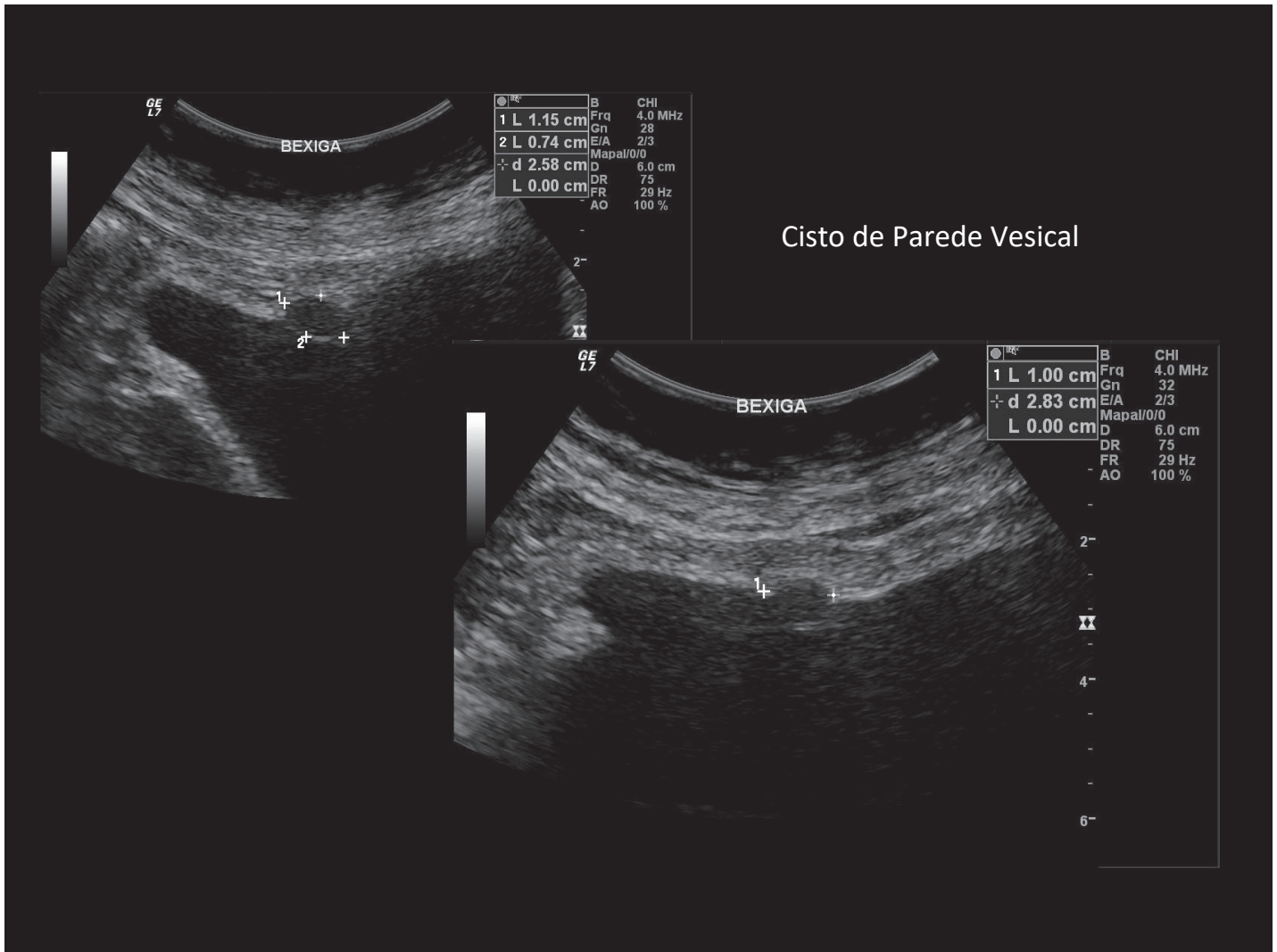


B CHI  
 Frq 4.0 MHz  
 Gn 24  
 E/A 1/3  
 Map: J/0  
 D 11.0 cm  
 4- DR 78  
 FR 8 Hz  
 AO 100 %

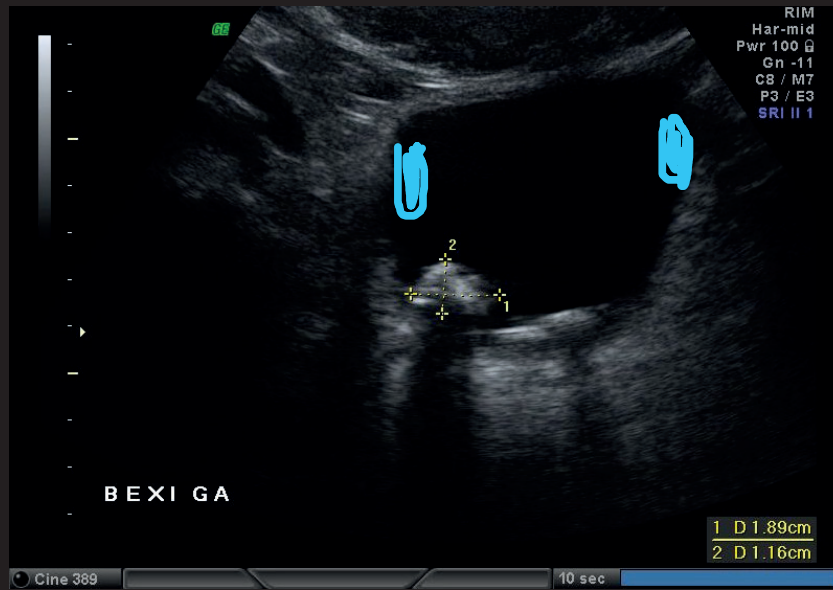
CF  
 6- Frq 2.5 MHz  
 Gn 19  
 L/A 1/3  
 AO 100 %  
 PRF 0.3 kHz  
 WF 24 Hz  
 8- S/P 3/14



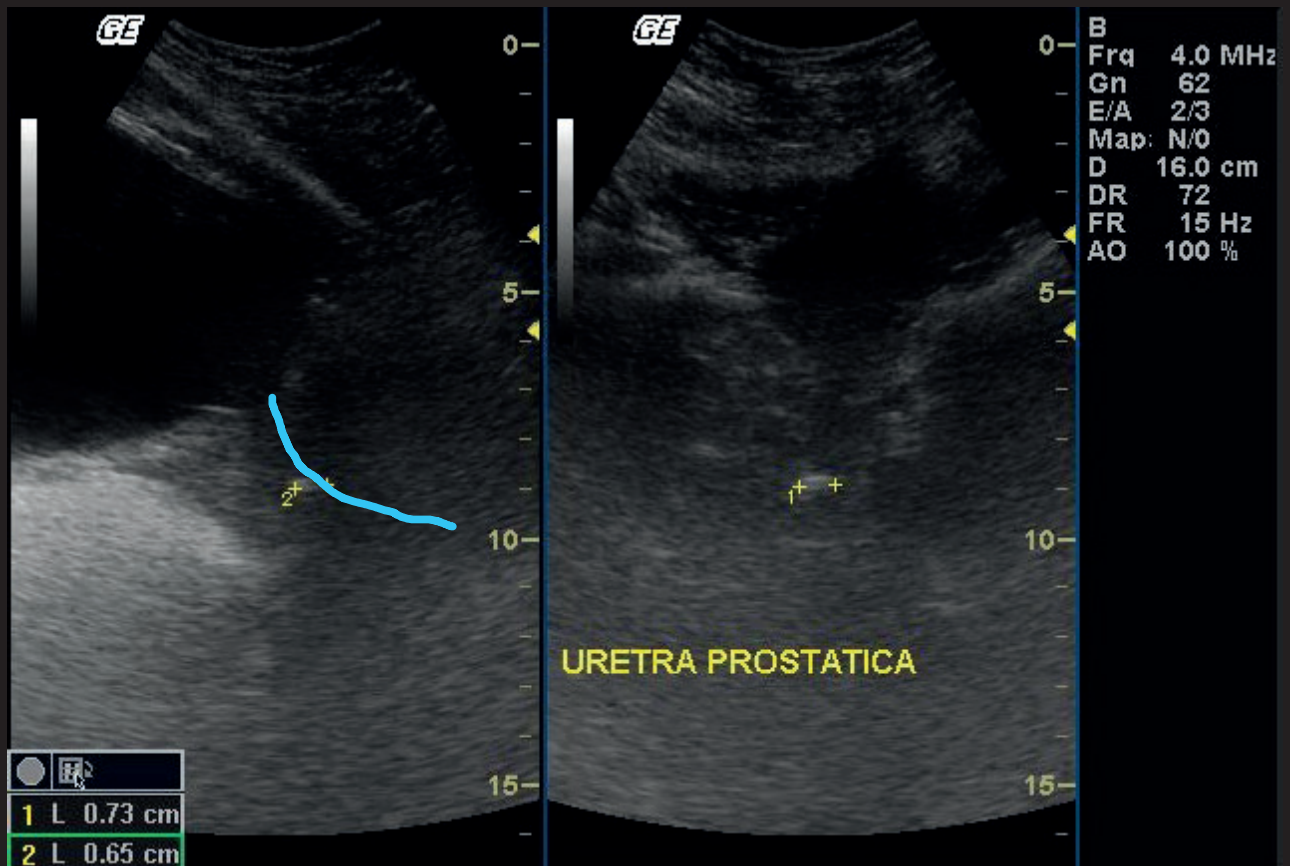
1 L 0.74 cm  
 2 L 0.62 cm



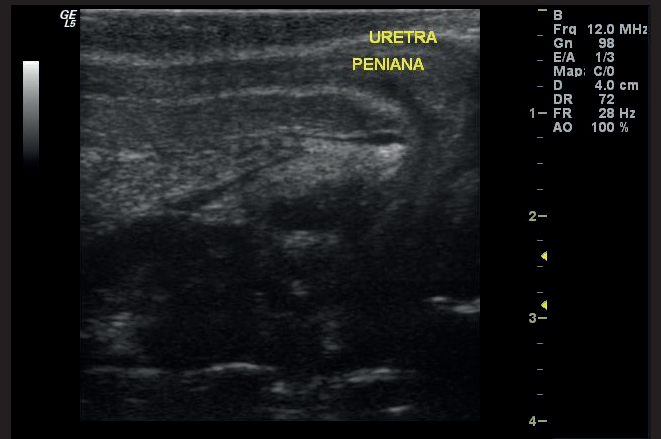
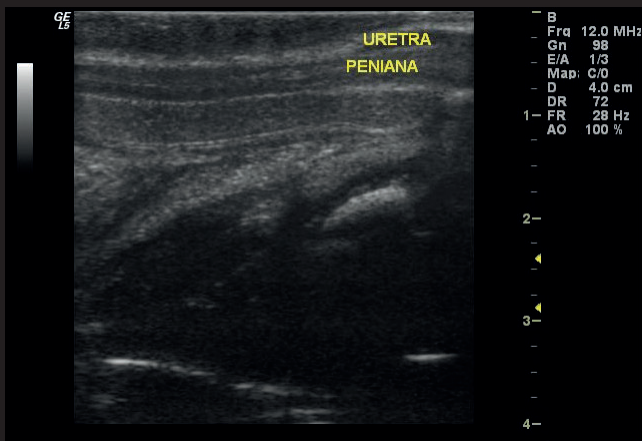
# Litíase vesical



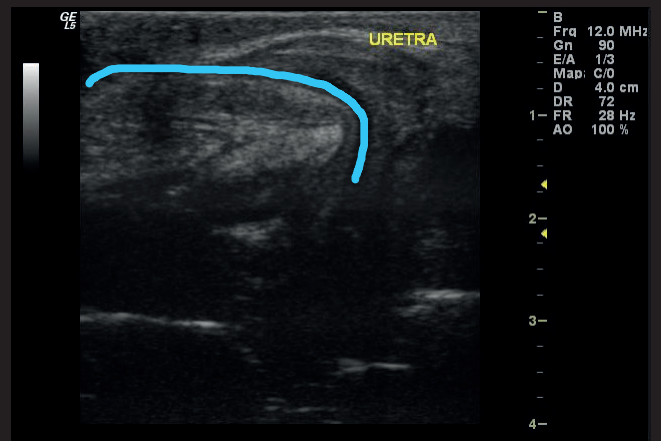
Lembrar do decúbito lateral



# Investigação de uretrorragia em lactente



Uretra:  
 Peniana  
 Bulbar  
 Membranosa  
 Prostática



## Anastomose Vesicouretral

## Investigação de recidiva tumoral



# Anastomose Vesicouretral

## Investigação de recidiva tumoral

